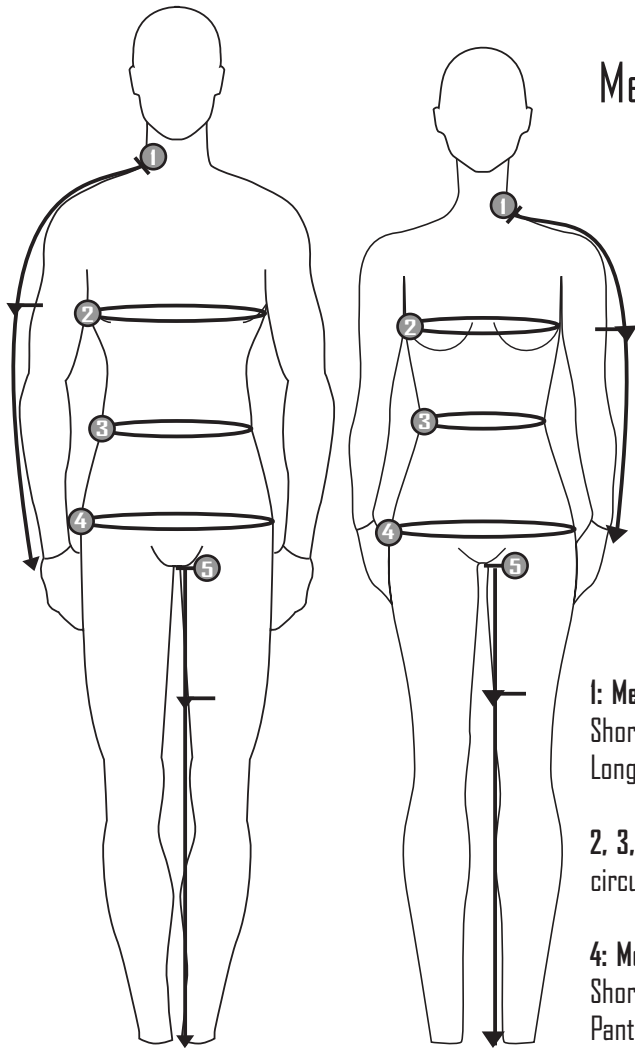


# CLUB & RACE CUT JERSEY

## Sizing Chart



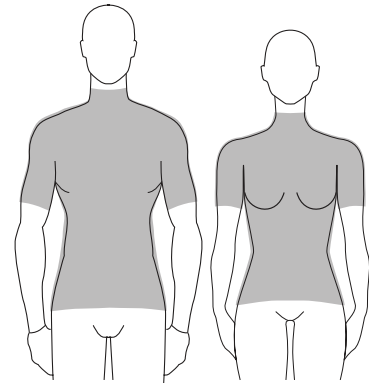
### Measurement Guide

- ① Sleeve Length
- ② Chest Measurement
- ③ Waist Measurement
- ④ Hip Measurement
- ⑤ Inseam

**1: Measurement Point**  
 Short Sleeve-neck to Bicep  
 Long Sleeve- neck to wrist

**2, 3, 4: Measurement Points**  
 circumference of body

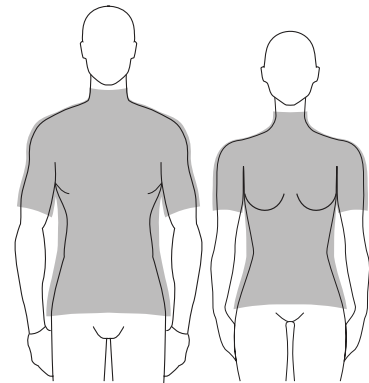
**4: Measurement Point-**  
 Shorts-crotch to thigh  
 Pants- crotch to ankle



### Fit Guide

#### Race Cut:

VOmax Race Cut is a pro jersey with a tailored fit. Our Race cut fits closely to the body and is designed to offer a European fit.



#### Club Cut:

VOmax Club Cut is classic jersey with a relaxed fit. Our Club cut fits loosely to the body and is designed to offer an American fit.

\*Womens Specific Apparel Available for all Garments with the exception of Jackets and Vest

### Men's / Unisex Sizing Chart

	Chest	Waist	Hip	Inseam Pants	Inseam Shorts	Sleeve Long	Sleeve Short
XS	34-35	28-30	34-36	30	9 1/4	31 1/2z	14
SM	36-37	31-32	36-38	31	9 1/2	32	14 1/4
MD	38-39	33-34	38-40	32	9 3/4	32 1/2	14 1/2
LG	40-41	35-36	40-42	33	10	33	14 3/4
XL	42-43	37-38	42-44	34	10 1/4	33 1/2	15
2XL	44-45	39-40	44-46	35	10 1/2	34	15 1/4
3XL	46-47	41-42	46-48	35 1/4	10 3/4	34 1/2	15 1/2
4XL	48-49	43-44	48-50	35 1/2	10 5/8	35 3/4	15 5/8

### Women's Sizing Chart

	Chest	Waist	Hip	Inseam Pants	Inseam Shorts	Sleeve Long	Sleeve Short
XS	32-33	24-26	31-33	28	7 1/2	28	11 3/4
SM	34-35	27-29	34-36	28 1/2	7 3/4	28 1/2	12
MD	36-37	30-33	37-39	29	8	29	12 1/4
LG	38-39	34-37	40-42	29 1/2	8 1/4	29 1/2	12 1/2
XL	40-41	38-40	43-45	30	8 1/5	30	12 3/4
2XL	42-43	41-44	46-48	30 1/2	8 3/4	30 1/2	13
3XL	44-45	45-48	49-51	31	9	31	13 1/4
4XL	46-47	49-50	52-54	31 1/4	9 1/8	31 1/4	13 1/8